

208A Stoney Creek Road Beverly Hills NSW

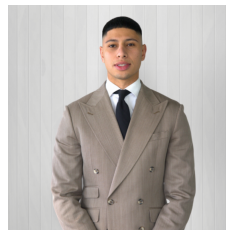
4 🏠 2 🚗

WELCOME TO YOUR NEW HOME?

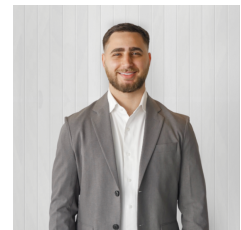
This impeccably maintained Torrens Title duplex, set on approximately 215sqm, offers a seamless blend of space, light, and functionality. The ground floor features expansive open-plan living and dining areas that flow naturally to the kitchen, designed with stone benchtops, a breakfast island, gas cooking, and ample storage, making it ideal for both daily living and entertaining.

Upstairs, the private bedrooms are thoughtfully arranged to maximize natural light and privacy, creating quiet, comfortable retreats for the whole family. The home also benefits from high ceilings throughout, enhancing the sense of space and openness. Outdoors, a generous

Type : Semi Detached
Land Size : 215 sqm
View : <https://www.ariarealtyco.com.au/sale/nsw/st-george/beverly-hills/residential/semi-detached/8503480>



Kirollos Mina
02 9025 9948



Ali Abouloukme
02 9025 9948

[For full version visit the website](https://www.ariarealtyco.com.au)



SITE PLAN



GROUND FLOOR



FIRST FLOOR



208A STONEY CREEK ROAD, BEVERLY HILLS

Scale in metres, indicative only. Dimensions are approximate.
 All information contained here is gathered from sources we believe to be reliable.
 However, we cannot guarantee its accuracy, and interested persons should rely on their enquiries.