



58 Winifred Street Condell Park NSW

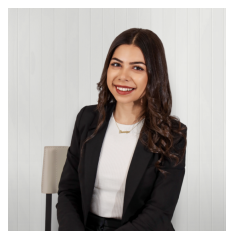
5 2 2

WELCOME TO YOUR NEW HOME?.

Offering a perfect blend of comfort, space, and convenience, this impressive five-bedroom duplex is the ideal place to call home. With generous living spaces and well-thought-out design, this home is perfect for growing families or those who love to entertain. Featuring a well-positioned bedroom downstairs, with the main bedroom with an ensuite, and three additional bedrooms upstairs, this property ensures privacy and room for everyone. The spacious upstairs bathroom and ample living areas provide everything you need for modern living. Situated in a highly sought-after location, with easy access to local amenities, schools, and transport options, this home delivers on both style and practicality.

[For full version visit the website](https://www.ariarealtyco.com.au)

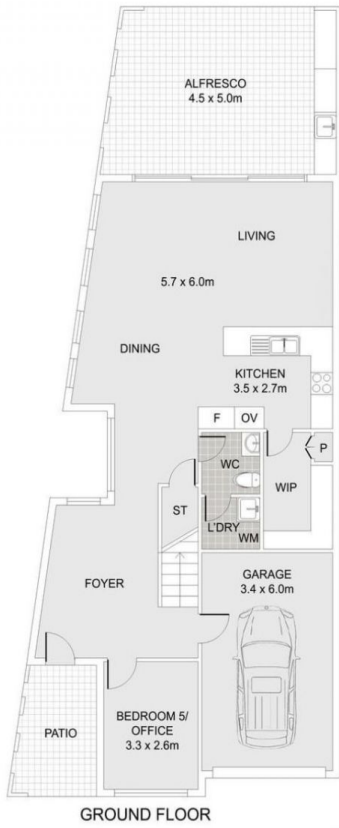
Type : Semi Detached
Price : \$ 1,362,000
Land Size : 313 sqm
View : <https://www.ariarealtyco.com.au/sale/nsw/c/anteburybankstown/condell-park/residential/semi-detached/8277271>



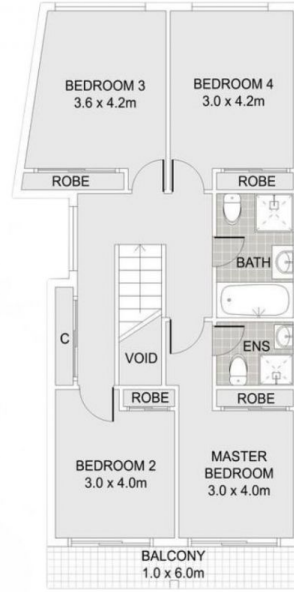
Dominique El-Tahan
02 9025 9948



Laura Raneri
02 9025 9948



GROUND FLOOR



FIRST FLOOR

58 Winifred Street, Condell Park



Scale in metres, Indicative only. Dimensions are approximate.
 All information contained here is gathered from sources we believe to be reliable.
 However, we cannot guarantee its accuracy, and interested persons should rely on their enquiries.