

19 Godwin Street Bexley NSW

9 🏠 6 🚗 4 🚗

WELCOME TO YOUR NEW HOME?.

Showcasing architectural brilliance, this exceptional residence offers luxurious and effortless living. Spanning two grand levels and featuring a secondary dwelling, the home boasts eight bedrooms and a variety of indoor-outdoor leisure spaces that seamlessly blend into an expansive open-plan design. Conveniently located near essential amenities, this remarkable property also offers enticing potential for passive income through multiple streams, making it the perfect setting for unforgettable family living.

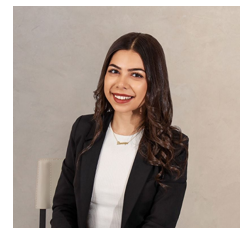
POTENTIAL RENTAL RETURN OF \$2,500 PER WEEK

[For full version visit the website](https://www.ariarealtyco.com.au)

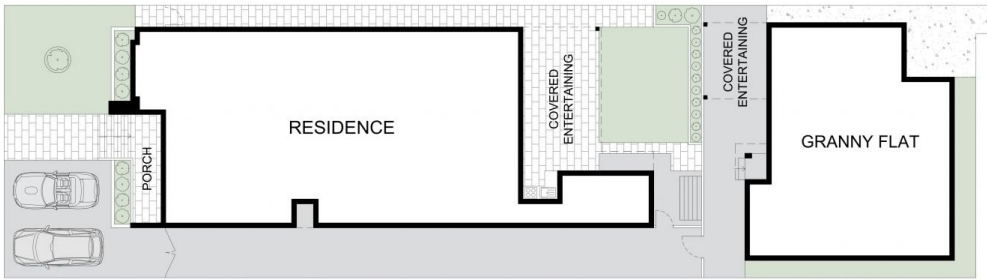
Type : House
Price : FOR SALE - \$2,600,000 - \$2,800,000
Land Size : 562.8 sqm
View : <https://www.ariarealtyco.com.au/sale/nsw/st-george/bexley/residential/house/8146379>



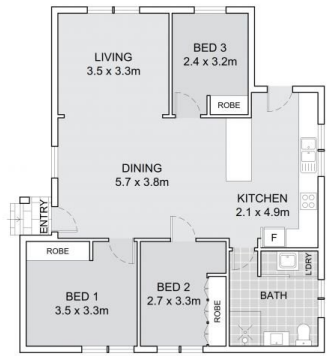
Ali Abouloukme
02 9025 9948



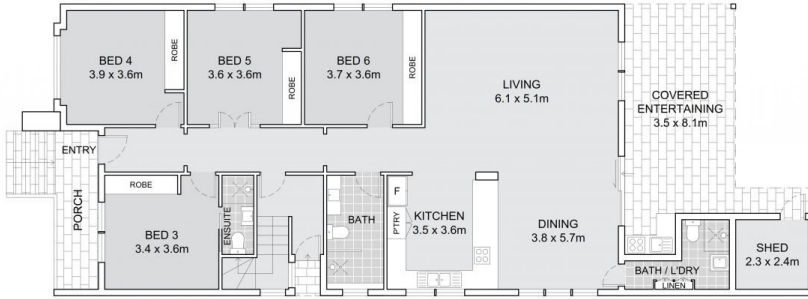
Dominique El-Tahan
02 9025 9948



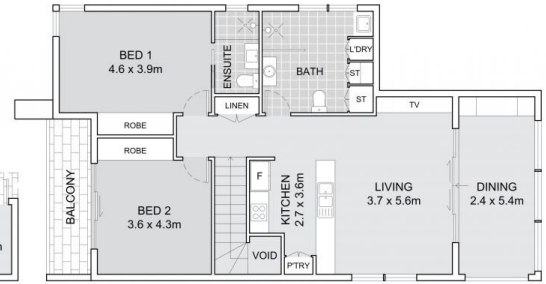
SITE PLAN



GROUND FLOOR
(GRANNY FLAT)



GROUND FLOOR



FIRST FLOOR

19 Godwin Street, Bexley



Scale in metres. Indicative only. Dimensions are approximate.
All information contained here is gathered from sources we believe to be reliable.
However, we cannot guarantee its accuracy, and interested persons should rely on their enquiries.

INTERNAL AREA: 261m²
GRANNY FLAT: 84m²
EXTERNAL AREA: 300m²
LAND AREA: 557m²